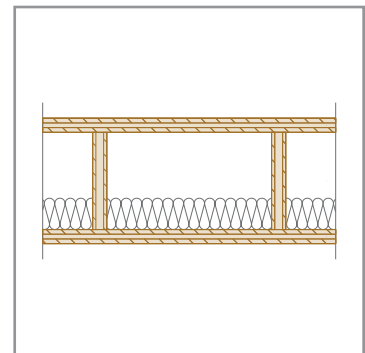




2

EN Ceilings

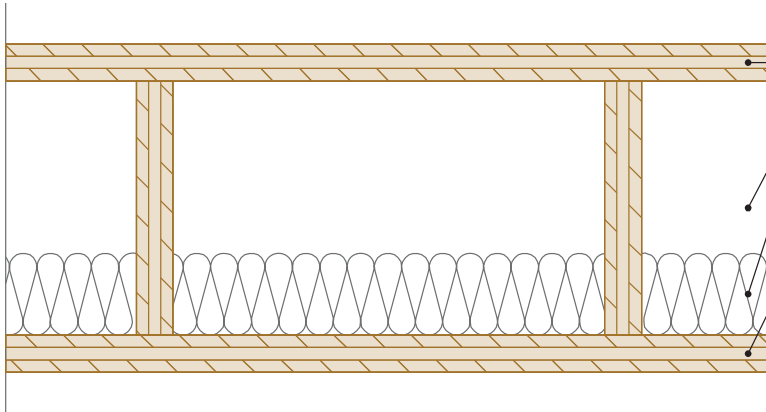
ES Techos



www.novatop-system.com

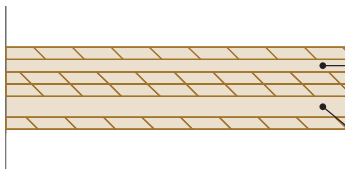
NOVATOP

CEILING COMPOSITION
/ Estructura del techo



- A – TOP PANEL / Tablero superior NOVATOP ELEMENT**
- B – AIR GAP / Espacio de aire**
- C – WOOD FIBREBOARD ($\lambda = 0,043 \text{ W/mK}$) (STEICOp[®]protect TYP L) / Tablero de fibra de madera // MINERAL INSULATION / Aislamiento mineral**
- D – BOTTOM PANEL / Tablero inferior NOVATOP ELEMENT**

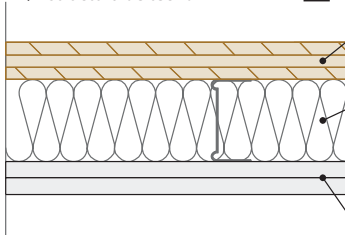
CEILING COMPOSITION **1**
/ Estructura de techo



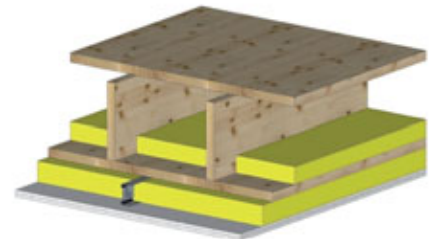
- D – BOTTOM PANEL / Tablero inferior NOVATOP ELEMENT**
- D – BOTTOM BOARD / Tablero inferior NOVATOP ELEMENT**



CEILING COMPOSITION **2**
/ Estructura de techo



- D – BOTTOM PANEL / Tablero inferior NOVATOP ELEMENT**
- C – WOOD FIBREBOARD ($\lambda = 0,043 \text{ W/mK}$) (STEICOp[®]protect TYP L) / Tablero de fibra de madera // MINERAL INSULATION ($\lambda = 0,040 \text{ W/mK}$) / Aislamiento mineral//**
- F – GYPSUM FIBREBOARD / Tablón de yeso-fibra (FERMACELL)**



F 200		no./ N°	ELEMENT	1	2
Dimensions [mm] / Dimensiones	NOVATOP ELEMENT	Top board / Tablero superior	A	27	27
		Air gap / Espacio de aire	B	186	153
		Insulation / Aislamiento	C		50
		Bottom board / Tablero inferior	D	27	27
		Bottom board / Tablero inferior	D		33
	Insulation / Aislamiento	C			40
	Gypsum fibreboard / Tablón de yeso-fibra	F			30
Total thickness of the structure / Espesor total de la estructura		Σ	240	240	270
Fire resistance / Resistencia al fuego		REI [min]	45	60	90
Laboratory measurements / Mediciones de laboratorio STN EN 1365-2: 2001		no. of record / N° del protocolo	FIRES-FR-175 -07-AUNS	FIRES-FR-173 -07-AUNS	determined by computing / determinado por cálculo

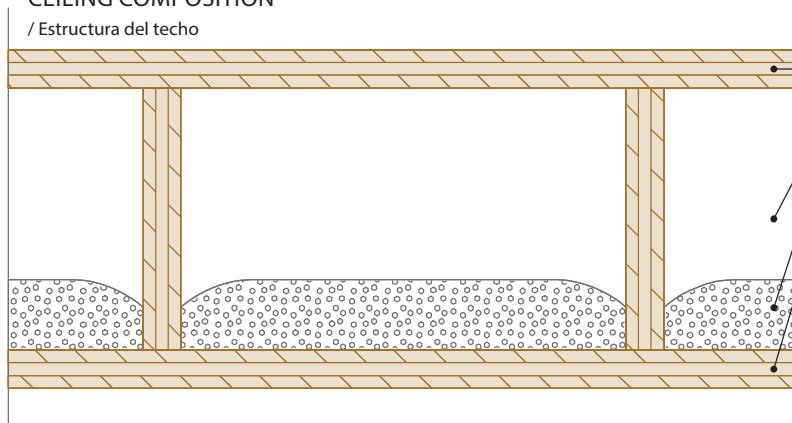
ROOF – OPTIONS OF CEILING COMPOSITION
Techo – Variantes de estructura de techo

F 200

Vertical section / Sección vertical

CEILING COMPOSITION

/ Estructura del techo



**D – TOP PANEL / Tablero superior
NOVATOP ELEMENT**

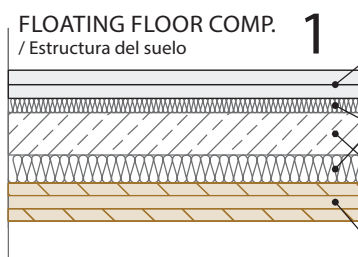
**E – AIR GAP
/ Espacio de aire**

F – LIMESTONE FILLING / Relleno de caliza

**G – BOTTOM PANEL / Tablero inferior
NOVATOP ELEMENT**

FLOATING FLOOR COMP. 1

/ Estructura del suelo

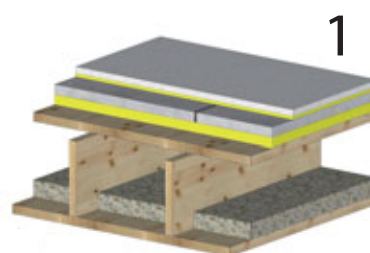


**A – FERMACELL FLOOR BOARD, *OSB
/ Elemento de suelo FERMACELL, *OSB**

**B – STEICOtherm, *Orsil N
/ STEICOtherm, *Orsil N**

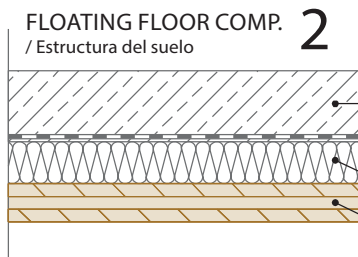
**C – CONCRETE SCREED [90 kg/m²],
*CONCRETE BOARD
/ Baldosas de hormigón [90kg/m²], *placa de hormigón**

**D – TOP PANEL / Tablero superior
NOVATOP ELEMENT**



FLOATING FLOOR COMP. 2

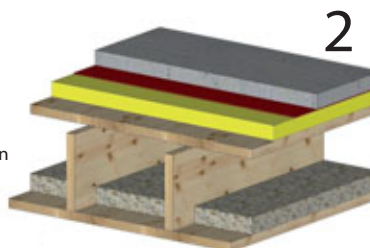
/ Estructura del suelo



**C – CONCRETE SCREED [90 kg/m²],
*CONCRETE BOARD
/ Baldosas de hormigón [90kg/m²], *placa de hormigón**

**B – STEICOtherm, *Orsil N
/ STEICOtherm, *Orsil N**

**D – TOP PANEL / Tablero superior
NOVATOP ELEMENT**

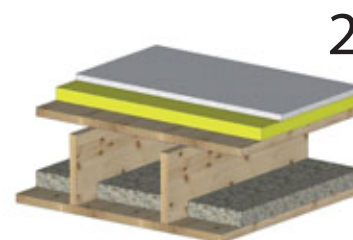
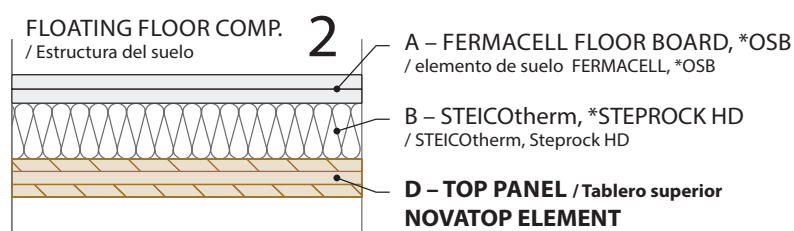
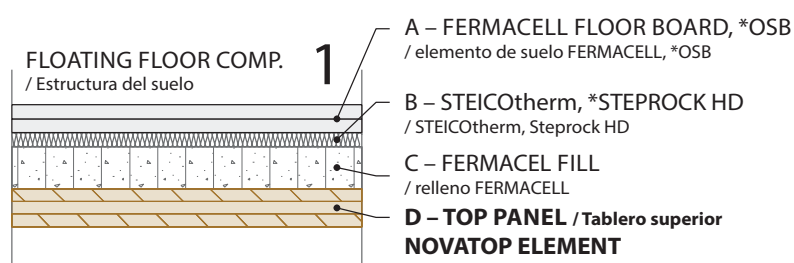
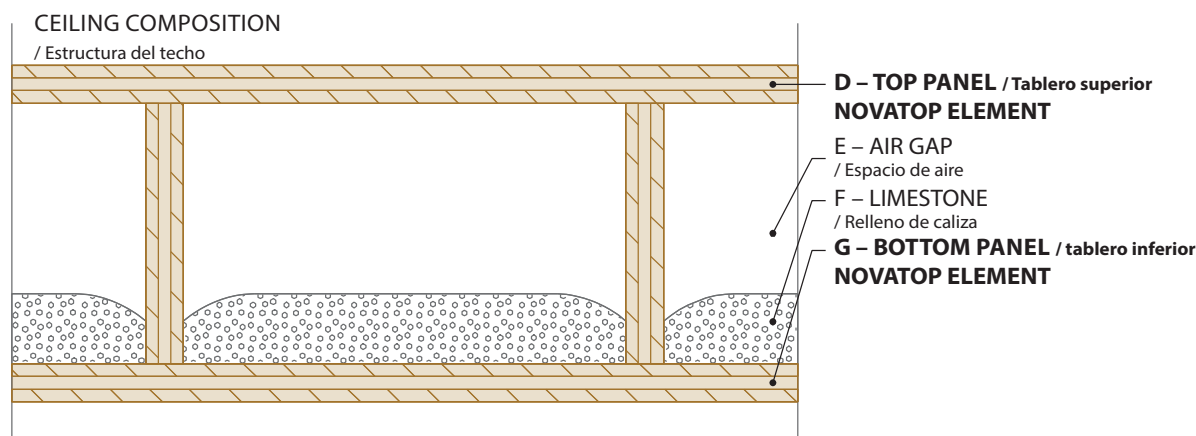


F 201		no./ N°	1	1	2	
Floor element Fermacell, *OSB / Elemento de suelo Fermacell *OSB		A	20	22*		
STEICOtherm / STEICOtherm		B	8	8		
CONCRETE SCREED [90 kg/m ²], *concrete board / Baldosas de hormigón [90 kg/m ²] *Placa de hormigón		C	38	38	50*	
STEICOtherm, *Orsil N / STEICOtherm, *Orsil N		B	20	20	40*	
Dimensions [mm] / Dimensiones	NOVATOP ELEMENT	Top board / Tablero superior	D	27	27	
		Air gap / Espacio de aire	E			
		Limestone / Relleno de caliza (kg/m ²)	F			40
		Bottom board / Tablero inferior	G	27	27	27
	Total thickness of the structure / Espesor total de la estructura		Σ	326	328	290
Airborne sound insulation / Aislación de sonido de aire		Rw [dB]	52	50	58	
Impact sound insulation / Aislación de ruido de pisoteos		Ln, w [dB]	66	65	67	
Laboratory measurements / Mediciones de laboratorio CSN EN ISO 140-3: 1995, CSN EN ISO 140-6: 2000		no. of record / N° del protocolo	CSI 142/08	CSI 142/08	CSI 145/08	

F 201

ROOF – OPTIONS OF FLOATING FLOOR COMPOSITION
Techo – variantes de estructura de falso techo

Vertical section / Sección vertical



F 202		no./ Nº	ELEMENT	ELEMENT	1	1	1	2	2	
Floor element Fermacell, *OSB / Elemento de suelo Fermacell*OSB		A			20	22*	20	20	30*	
Steico Therm, *Steprock HD / STEICOtherm, *Steprock HD		B			40	40	8	40	30*	
Fill FERMACEL / Relleno FERMACELL		C			30	30	60			
Dimensions [mm] / Dimensiones	NOVATOP ELEMENT	Top board / Tablero superior	D	27	27	27	27	27	27	
		Air gap / Espacio de aire	E							
		Limestone filling / Relleno de caliza (kg/m ²)	F		40	40	40		80	40
		Bottom board / Tablero inferior	G	27	27	27	27	27	27	27
Total thickness of the structure / Espesor total de la estructura		Σ	240	200	290	292	328	220	260	
Airborne sound insulation / Aislación de sonido de aire		Rw [dB]	27	36	62	62	59	60	55	
Impact sound insulation / Aislación de ruido de pisoteos		Ln, w [dB]	93	88	54	56	60	62	58	
Laboratory measurements / Mediciones de laboratorio ČSN EN ISO 140-3: 1995, ČSN EN ISO 140-6: 2000		no. of record / Nº del protocolo	CSI 317/07	CSI 318/07	CSI 144/08	CSI 144/08	CSI 143/08	CSI 146/08	CSI 319/07	

ROOF - OPTIONS OF FLOATING FLOOR COMPOSITION
Techo – variantes de estructura del falso techo

F 202