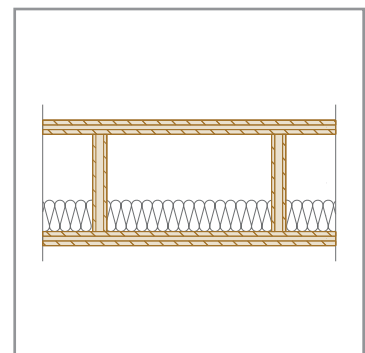




2

FR Planchers

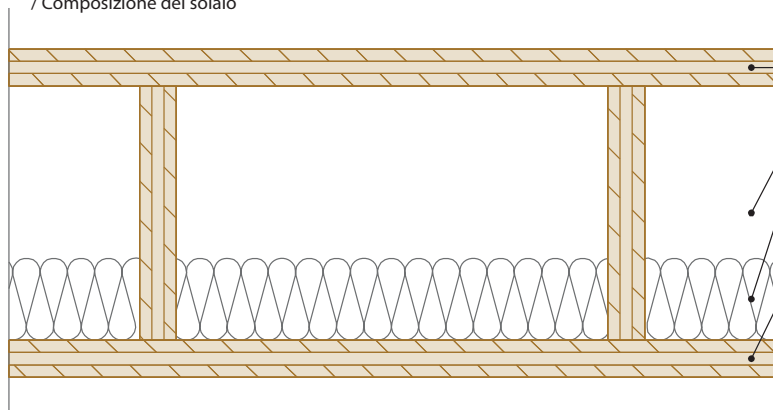
IT Solai



www.novatop-system.com

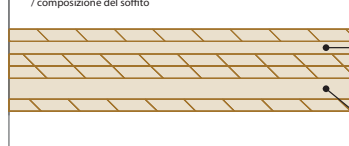
NOVATOP

COMPOSITION DU PLANCHER
/ Composizione del solaio



- A – PANNEAU SUPÉRIEUR / Pannello superiore NOVATOP ELEMENT
- B – VIDE D’AIR / Camera d’aria
- C – ISOLANT FIBRE DE BOIS ($\lambda = 0,043 \text{ W/mK}$) (STEICOp Protect TYP L) / Pannello fibra di legno // ISOLATION MINÉRALE / Isolamento minerale
- D – PANNEAU INFÉRIEUR / Pannello inferiore NOVATOP ELEMENT

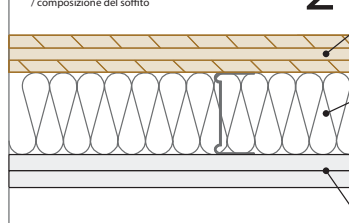
COMPOSITION DE LA SOUS-FACE 1
/ composizione del soffitto



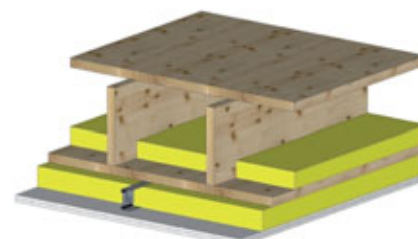
- D – PANNEAU INFÉRIEUR / Pannello inferiore NOVATOP ELEMENT
- D – PANNEAU INFÉRIEUR / Pannello inferiore NOVATOP ELEMENT



COMPOSITION DE LA SOUS-FACE 2
/ composizione del soffitto



- D – PANNEAU INFÉRIEUR / Pannello inferiore NOVATOP ELEMENT
- C – ISOLANT FIBRE DE BOIS ($\lambda = 0,043 \text{ W/mK}$) (STEICOp Protect TYP L) / Pannello fibra di legno // ISOLATION MINÉRALE ($\lambda = 0,040 \text{ W/mK}$) / Isolamento minerale //
- F – PLAQUE FIBRE-GYPSE / Lastra gessofibra (FERMACELL)



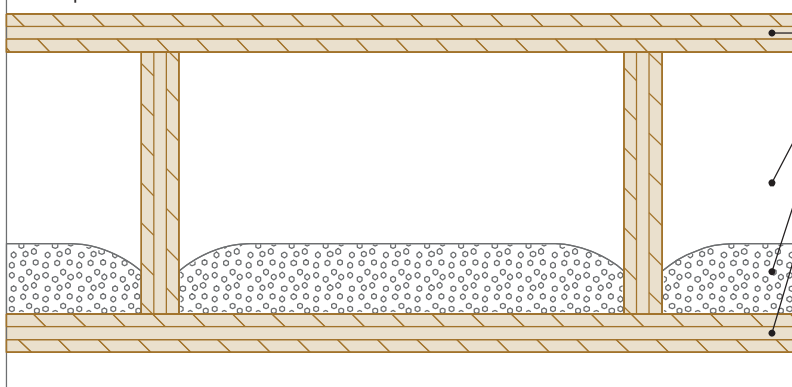
F 200		n° /nr.	Element	1	2
Dimensions [mm] / Dimensioni	NOVATOP Element	Panneau supérieur / Pannello superiore	A	27	27
		Vide d’air / Camera d’aria	B	186	153
		Isolation / Isolamento	C		50
		Panneau inférieur / Pannello inferiore	D	27	27
		Panneau inférieur / Pannello inferiore	D		33
	Isolation / Isolamento	C		40	
	Plaque fibre-gypse / Lastra gessofibra	F		30	
Epaisseur totale de la enveloppes / Spessore totale della struttura		Σ	240	240	270
Résistance au feu / Resistenza al fuoco		REI [min]	45	60	90
Laboratoire / Analisi in laboratorio STN EN 1365-2: 2001		Numero de protocole / Nr. protocollo	FIRES-FR-175-07-AUNS	FIRES-FR-173-07-AUNS	Défini par le calcul / Determinato tramite calcolo

PLANCHER – VARIANTES DE LA COMPOSITION EN SOUS-FACE
Solaio – Alternative della composizione della vista inferiore

F 200

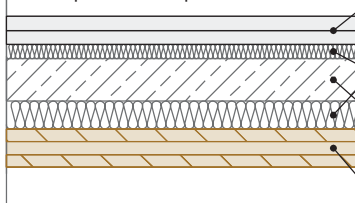
COUPE VERTICALE / Sezione verticale

COMPOSITION DU PLANCHER
/ Composizione del solaio

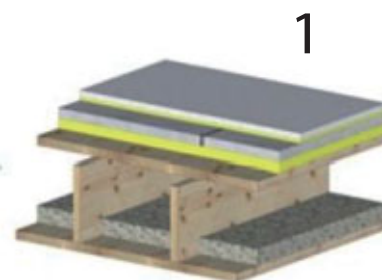


- D – PANNEAU SUPÉRIEUR / Pannello superiore NOVATOP ELEMENT**
- E – LAME D’AIR / Camera d’aria**
- F – GRAVIER CALCAIRE / Graniglia di calcare**
- G – PANNEAU DE BASE / Pannello inferiore NOVATOP ELEMENT**

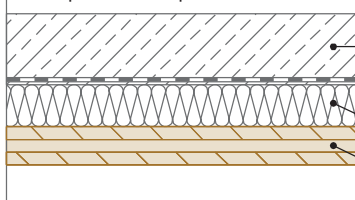
COMPOSITION DU SOL 1
/ Composizione del pavimento



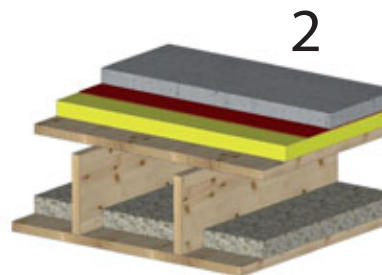
- A – DALLE DE SOL FERMACELL, *OSB / Componente di pavimentazione FERMACELL, *OSB**
- B – STEICOtherm, *Orsil N / STEICOtherm, *Orsil N**
- C – CHAPE CIMENT [90 kg/m²], * PLAQUE EN BÉTON, Piastrelle in cemento [90 kg/m²], * pannello in cemento**
- D – PANNEAU SUPÉRIEUR / Pannello superiore NOVATOP ELEMENT**



COMPOSITION DU SOL 2
/ Composizione del pavimento



- C – CHAPE CIMENT [90 kg/m²], * PLAQUE EN BÉTON, Piastrelle in cemento [90 kg/m²], * pannello in cemento**
- B – STEICOtherm, *Orsil N / STEICOtherm, *Orsil N**
- D – PANNEAU SUPÉRIEUR / Pannello superiore NOVATOP ELEMENT**



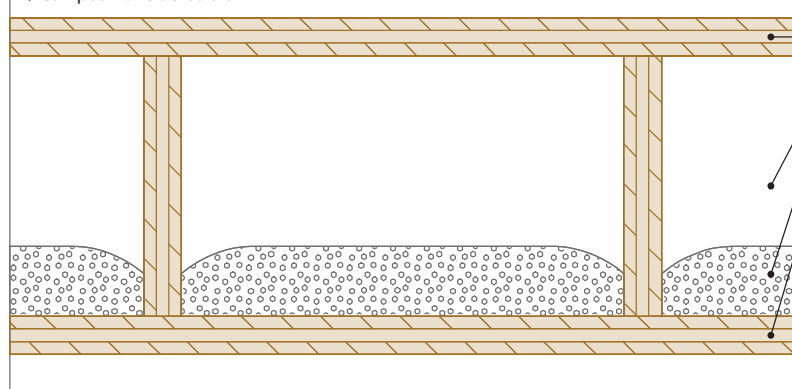
F 201		n° /nr.	1	1	2	
Dalle de sol FERMACELL, *OSB / Componente di pavimentazione FERMACELL *OSB		A	20	22*		
STEICOtherm / STEICOtherm		B	8	8		
Chape ciment [90 kg/m ²], * Plaque en béton / Piastrelle in cemento [90 kg/m ²], * pannello in cemento		C	38	38	50*	
STEICOtherm, *Orsil N / STEICOtherm, *Orsil N		B	20	20	40*	
Dimensions [mm] / Dimensioni	NOVATOP Element	Panneau supérieur / Pannello superiore	D	27	27	27
		Vide d'air / Camera d'aria	E			
		Gravier calcaire / Graniglia di calcare (kg/m ²)	F			40
		Panneau inférieur / Pannello inferiore	G	27	27	27
Epaisseur totale de la enveloppes / Spessore totale della struttura		Σ	326	328	290	
Isolation acoustique / Potere fonoisolante per via aerea		Rw [dB]	52	50	58	
Atténuation bruits de chocs / Indice di valutazione del livello di rumore di calpestio		Ln, w [dB]	66	65	67	
Laboratoire / Analisi in laboratorio CSN EN ISO 140-3: 1995, CSN EN ISO 140-6: 2000		Numero de protocole / Nr. protocollo	CSI 142/08	CSI 142/08	CSI 145/08	

F 201

PLANCHER - VARIANTES DE LA COMPOSITION EN SOL
Solaio – Alternative della composizione della vista inferiore

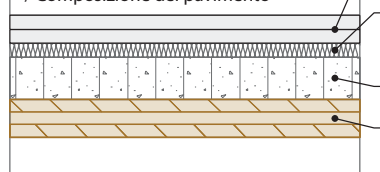
COUPE VERTICALE / Sezione verticale

COMPOSITION DU PLANCHER
/ Composizione del solaio

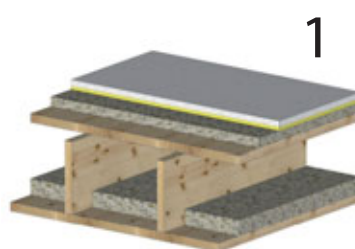


- D – PANNEAU SUPÉRIEUR**
/ Pannello superiore
NOVATOP ELEMENT
- E – LAME D’AIR**
/ Camera d’aria
- F – Gravier calcaire**
/ Graniglia di calcare
- G – Panneau de base / Pannello inferiore**
NOVATOP ELEMENT

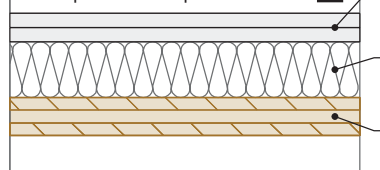
COMPOSITION DU SOL
/ Composizione del pavimento



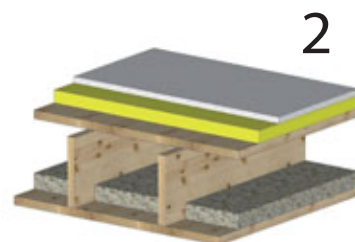
- 1**
- A – DALLE DE SOL FERMACELL, *OSB**
/ Componente di pavimentazione FERMACELL, *OSB
- B – STEICOtherm, *STEPROCK HD**
/ STEICOtherm, Steprock HD
- C – Granules pour nids d’abeille FERMACELL**
/ Granulare Fermacell
- D – PANNEAU SUPÉRIEUR / Pannello superiore**
NOVATOP ELEMENT



COMPOSITION DU SOL
/ Composizione del pavimento



- 2**
- A – DALLE DE SOL FERMACELL, *OSB**
/ Componente di pavimentazione FERMACELL, *OSB
- B – STEICOtherm, *STEPROCK HD**
/ STEICOtherm, Steprock HD
- D – PANNEAU SUPÉRIEUR / Pannello superiore**
NOVATOP ELEMENT



F 202		n° /nr.	Element	Element	1	1	1	2	2	
Dalle de sol FERMACELL, *OSB / Componente di pavimentazione Fermacell *OSB		A			20	22*	20	20	30*	
STEICO Therm, *Steprock HD / STEICOtherm, *Steprock HD		B			40	40	8	40	30*	
Granules pour nids d’abeille FERMACEL / Granulare FERMACEL		C			30	30	60			
Dimensions [mm] / Dimensioni	NOVATOP Element	Panneau supérieur / Pannello superiore	D	27	27	27	27	27	27	
		Vide d’air / Camera d’aria	E							
		Gravier calcaire / Graniglia di calcare (kg/m²)	F		40	40	40		80	40
		Panneau inférieur / Pannello inferiore	G	27	27	27	27	27	27	27
Epaisseur totale de la enveloppes / Spessore totale della struttura		Σ	240	200	290	292	328	220	260	
Isolation acoustique / Potere fonoisolante per via aerea		Rw [dB]	27	36	62	62	59	60	55	
Atténuation bruits de chocs / Indice di valutazione del livello di rumore di calpestio		Ln, w [dB]	93	88	54	56	60	62	58	
Laboratoire/ Analisi in laboratorio ČSN EN ISO 140-3: 1995, ČSN EN ISO 140-6: 2000		Numero de protocole / Nr. protocollo	CSI 317/07	CSI 318/07	CSI 144/08	CSI 144/08	CSI 143/08	CSI 146/08	CSI 319/07	

PLANCHER - VARIANTES DE LA COMPOSITION EN SOL
Solaio – Alternative della composizione del pavimento

F 202